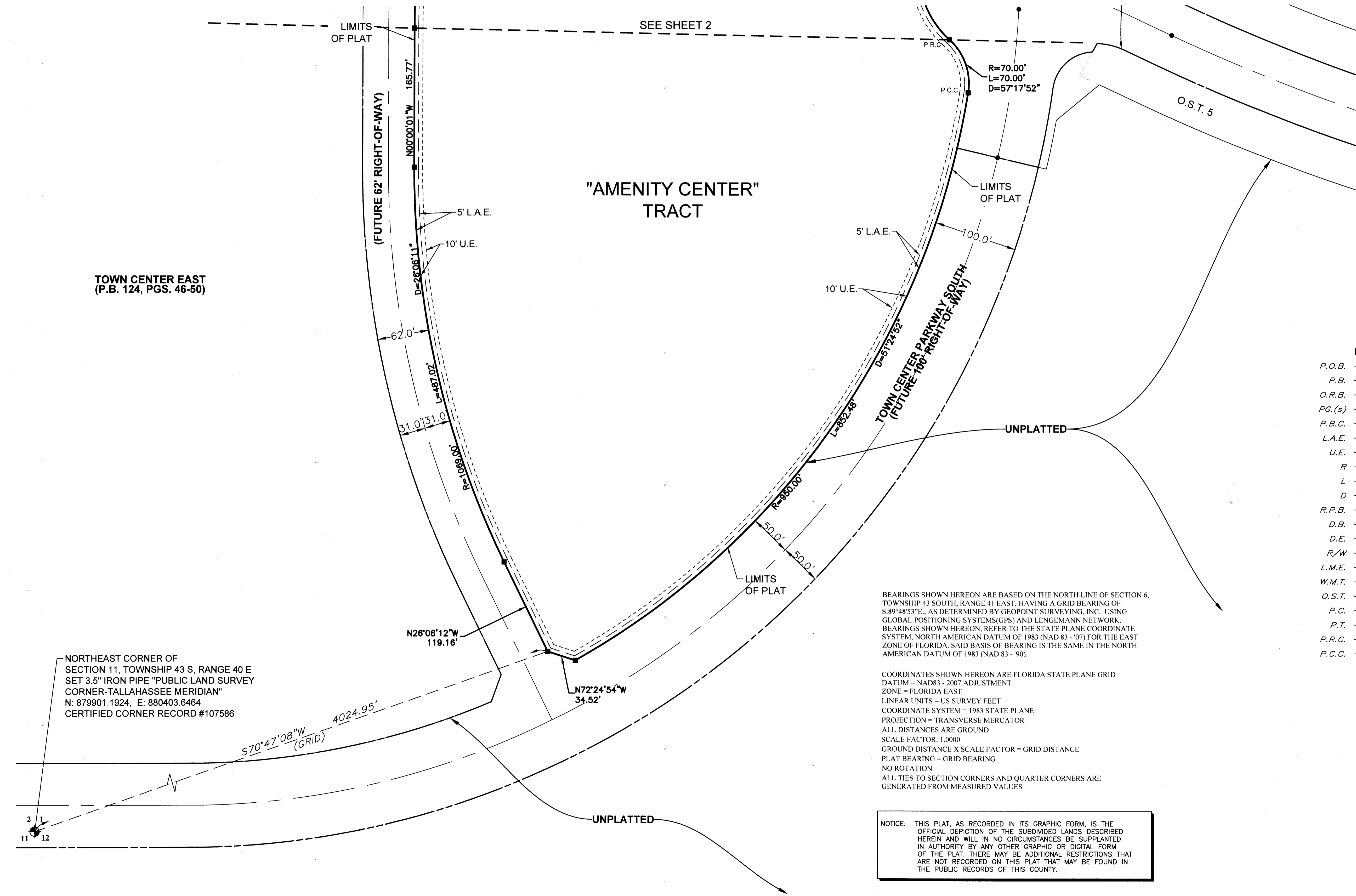
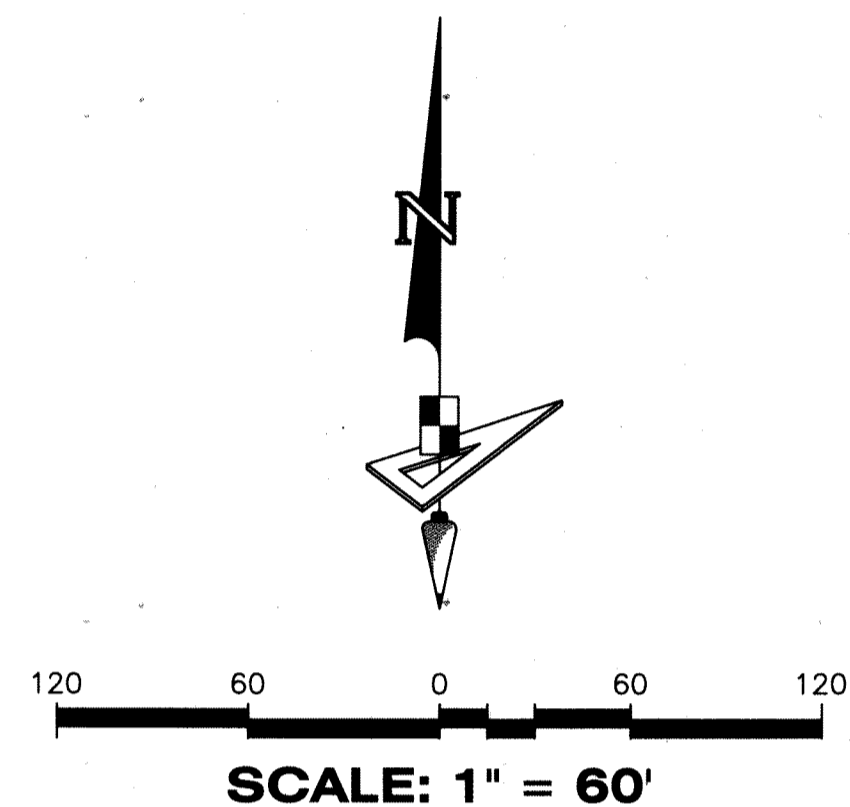
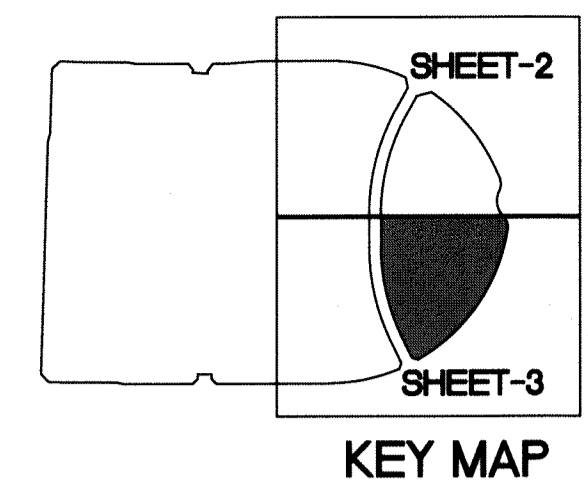


# WESTLAKE AMENITY PARCEL

BEING A REPLAT OF O.S.T. 3 AS SHOWN ON TOWN CENTER PARKWAY NORTH,  
RECORDED IN PLAT BOOK 123, PAGES 106 THROUGH 118, INCLUSIVE, TOGETHER  
WITH A PORTION OF SECTION 1, TOWNSHIP 43 SOUTH, RANGE 40 EAST,  
CITY OF WESTLAKE, PALM BEACH COUNTY, FLORIDA

# 67



**LEGEND**

P.O.B. -----	POINT OF BEGINNING
P.B. -----	PLAT BOOK
O.R.B. -----	OFFICIAL RECORDS BOOK
PG.(s) -----	PAGE(S)
P.B.C. -----	PALM BEACH COUNTY
L.A.E. -----	LIMITED ACCESS EASEMENT
U.E. -----	UTILITY EASEMENT
R -----	RADIUS
L -----	ARCH LENGTH
D -----	DELTA ANGLE
R.P.B. -----	ROAD PLAT BOOK
D.B. -----	DEED BOOK
D.E. -----	DRAINAGE EASEMENT
R/W -----	RIGHT-OF-WAY
L.M.E. -----	LAKE MAINTENANCE EASEMENT
W.M.T. -----	WATER MANAGEMENT TRACT
O.S.T. -----	OPEN SPACE TRACT
P.C. -----	POINT OF CURVATURE
P.T. -----	POINT OF TANGENCY
P.R.C. -----	POINT OF REVERSE CURVATURE
P.C.C. -----	POINT OF COMPOUND CURVATURE

BEARINGS SHOWN HEREON ARE BASED ON THE NORTH LINE OF SECTION 6, TOWNSHIP 43 SOUTH, RANGE 41 EAST, HAVING A GRID BEARING OF S.89°48'53"E., AS DETERMINED BY GEOPoint SURVEYING, INC. USING GLOBAL POSITIONING SYSTEMS (GPS) AND LENGEMANN NETWORK. BEARINGS SHOWN HEREON, REFER TO THE STATE PLANE COORDINATE SYSTEM, NORTH AMERICAN DATUM OF 1983 (NAD 83 - '07) FOR THE EAST ZONE OF FLORIDA. SAID BASIS OF BEARING IS THE SAME IN THE NORTH AMERICAN DATUM OF 1983 (NAD 83 - '90).

COORDINATES SHOWN HEREON ARE FLORIDA STATE PLANE GRID DATUM = NAD83 - 2007 ADJUSTMENT ZONE = FLORIDA EAST LINEAR UNITS = US SURVEY FEET COORDINATE SYSTEM = 1983 STATE PLANE PROJECTION = TRANSVERSE MERCATOR ALL DISTANCES ARE GROUND SCALE FACTOR: 1.0000 GROUND DISTANCE X SCALE FACTOR = GRID DISTANCE PLAT BEARING = GRID BEARING NO ROTATION ALL TIES TO SECTION CORNERS AND QUARTER CORNERS ARE GENERATED FROM MEASURED VALUES

**NOTICE:** THIS PLAT, AS RECORDED IN ITS GRAPHIC FORM, IS THE OFFICIAL DEPICTION OF THE SUBDIVIDED LANDS DESCRIBED HEREIN AND WILL, IN NO CIRCUMSTANCES, BE SUPPLANTED IN AUTHORITY BY ANY OTHER GRAPHIC OR DIGITAL FORM OF THE PLAT. THERE MAY BE ADDITIONAL RESTRICTIONS THAT ARE NOT RECORDED ON THIS PLAT THAT MAY BE FOUND IN THE PUBLIC RECORDS OF THIS COUNTY.

NORTHEAST CORNER OF SECTION 11, TOWNSHIP 43 S, RANGE 40 E SET 3.5" IRON PIPE "PUBLIC LAND SURVEY CORNER-TALLAHASSEE MERIDIAN" N: 879901.1924, E: 880403.6464 CERTIFIED CORNER RECORD #107586

**GeoPoint**  
Surveying, Inc.

4152 W. Blue Heron Blvd. Suite 105  
Riviera Beach, FL 33404

Phone: (561) 444-2720  
www.geopointsurvey.com  
Licensed Business Number LB 7768

Sheet No. 3 of 3 Sheets